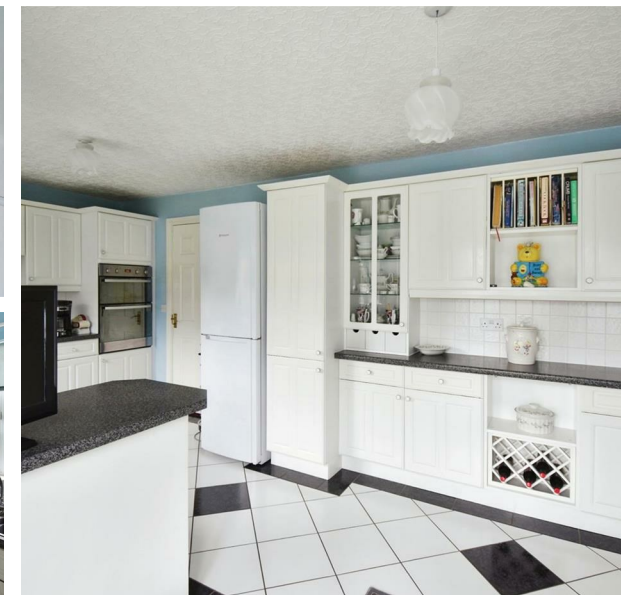


The Beeches, Maryport, CA15 7AH

Asking Price £270,000

Council Tax Band: D



It is very hard to find a bungalow for sale in Maryport, and even harder to find a good one.

THIS DETACHED BUNGALOW ON THE BEECHES IS ONE OF THE VERY BEST!!

- Three Proper Bedrooms
- Bathroom and EnSuite
- Spacious Lounge Diner
- Private Garden
- Garage and Driveway

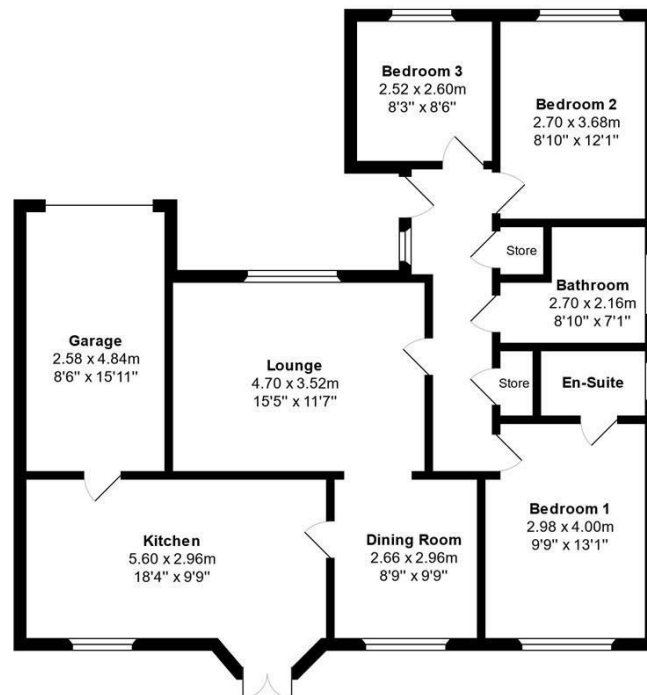
Located in a great location on the popular Beeches estate, this much-loved, family home has been extremely well maintained. A bungalow with the feel of a modern home, it has space and quality in every room.

The heart of this lovely home is the semi-open plan, lounge and dining room, which benefits from plenty of natural light and has plenty of room for a couple of sofas, and a full-size dining table.

The large kitchen benefits from lots of storage units and worktop space and has an integrated electric oven, gas hob and extractor. It can also accommodate a dining table, adding flexibility to how you would prefer to use the space in the property

Floor Plan: 60 The Beeches, Maryport

Not to Scale: Dimensions and layout for guidance only



Open House West Cumbria



Energy Efficiency Rating		Current	Potential
<i>Very energy efficient - lower running costs</i>			
(92 plus)	A		
(81-91)	B		
(69-80)	C		
(55-68)	D		
(39-54)	E		
(21-38)	F		
(1-20)	G		
<i>Not energy efficient - higher running costs</i>			
England & Wales		EU Directive 2002/91/EC	